

Forecast No: _____

Quote Date: _____

BRC Rep: _____

Request for Quotation

CLIENT DETAILS

Project Name: _____

Sales Office/Rep: _____

Phone: _____ Email: _____

Project Architect/Designer: _____

End User: _____

Approx Install Date: _____

Approx Completion Date: _____

New customer

Existing customer

PRODUCTS TO BE QUOTED

Dwel Tecna Vault New Reconfiguration

PROJECT DETAILS

Approx Total LF: _____ Number of Floors: _____ Average Ceiling Height: _____

Floor Type: Carpet Tile Hardwood Concrete Other: _____

Ceiling Type: Drop Ceiling Drywall Open to Above Other: _____

INSTALLATION

Provided by Dealer or Contractor: Provide contact information: _____

Provided by BRC: Complete below:

Standard working hours:

Union Labour:

Freight elevator:

Overtime Installation:

Non-Union Labour:

Stair carry:

Street Offload:

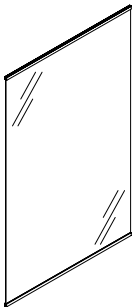
Loading Dock: YES NO

Seismic zone:

Short truck (no 53` trailer)

Special Delivery Instructions: _____

DWEL (Store Front Glass Partitions)



Glass details:

Clear:

Frosted:

Acoustic PVB:

Adhesive films:

Silkscreen printing:

Other: _____

Trim finishes:

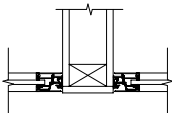
Anodized clear silver (standard):

Anodized Dark Black:

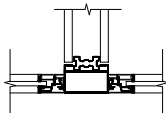
Polished Aluminum:

Other: _____

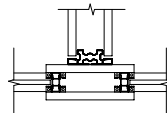
MULTIPLE OFFICE CONFIGURATIONS



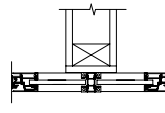
Drywall



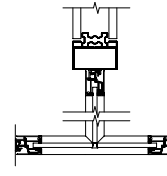
Tecna to the Front



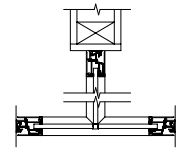
Technical Module w/Tecna Demising



Flyby



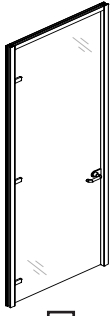
3-Way Dwel with Tecna Demising



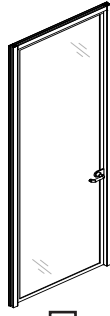
3-Way Dwel with GWB Demising

DWEL & TECNA DOORS

All doors can be used for both Dwel and Tecna product lines.



Framless Glass Swing



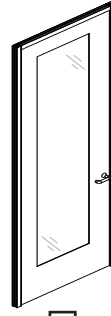
Framed Glass Swing



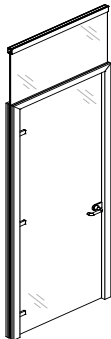
Wooden Swing



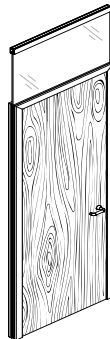
Wooden Framed Glass Swing



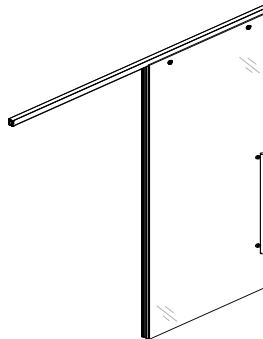
Aluminum Framed Glass Swing



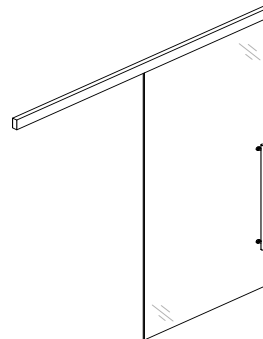
Framed Glass Swing with Transom



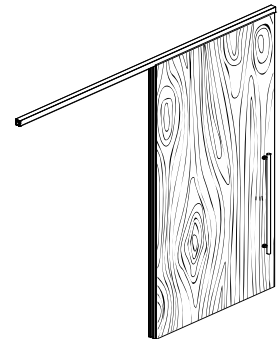
Solid Wood Swing with Transom



Sliding Glass



Surface Mounted Glass



Sliding Wood

Transom Door Height:

- 7' - 0":
- 8' - 0":
- 9' - 0":

Glass Doors:

- Clear:
- Frosted:
- Etched:

Locks:

- Floor lock:
- Ceiling lock:
- Core: SFIC
 LFIC

Wood Doors:

- Laminate finish:
- Veneer wood:
- Hollow core:
- Solid core:
- Specify veneer finish: _____

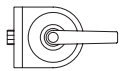
Door Hardware:

- Soft close:
- Sound seal kit:
- Drop seal:
- Auto closing:
- Mag lock:
- Electric strike:

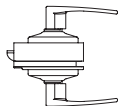
Bar Pull:

- 24" Non-locking:
- 36" Non-locking:
- 48" Non-locking:
- 48" Locking:
- Other size: _____

Handle Style:



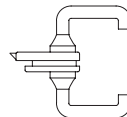
Cylindrical passage set



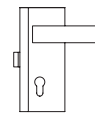
Cylindrical lock set



Hoppe lock set



Rectangular passage set



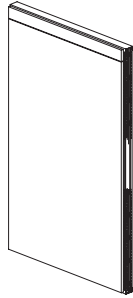
Rectangular lock set

None of the above - customer supplied

TECNA (Glass or Solid Partition)



Mono



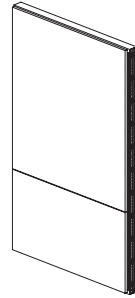
Mono/
Header



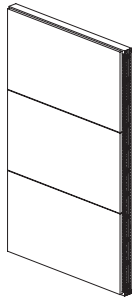
Mono/
Kick



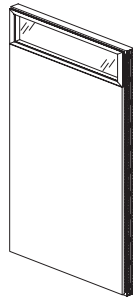
Mono/
Header/Kick



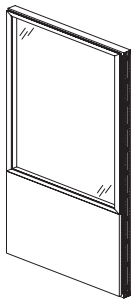
Two Segments



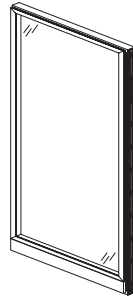
Three Segments



Glazed Header



Part Glazed



Full Glazed

Panel Configuration:

Select type of panel shown above from list 1. Then select segment finishes ordered from top to bottom from lists 2, 3 and 4.

For example: a Mono panel would require a selection from list 1 & 2 only. A three segment panel would require a selection from list 1, 2, 3 & 4. Each segment may have the same or different finishes.

List 1 - Panel Type

- Mono
- Mono with header
- Mono with Kick
- Mono with header & kick
- Two segments
- Three segments
- Glazed header
- Part glazed
- Full glazed
- Other: _____

List 2 - Segment Finish

- Laminate (horizontal grain)
- Laminate (vertical grain)
- White marker board
- Magnetic marker board
- Back painted glass
- Fabric
- Single glass (clear)
- Single glass (frosted)
- Double glass (clear)
- Double glass (frosted)

List 3 - Segment Finish

- Laminate (horizontal grain)
- Laminate (vertical grain)
- White marker board
- Magnetic marker board
- Back painted glass
- Fabric
- Single glass (clear)
- Single glass (frosted)
- Double glass (clear)
- Double glass (frosted)

List 4 - Segment Finish

- Laminate (horizontal grain)
- Laminate (vertical grain)
- White marker board
- Magnetic marker board
- Back painted glass
- Fabric
- Single glass (clear)
- Single glass (frosted)
- Double glass (clear)
- Double glass (frosted)

Trim Finish:

- Clear Anodized
- Black Anodized
- Polished Aluminum

Electrical:

- NO
- YES → Conventional Plug & Play

Insulation:

- YES NO

NOTES

Pricing is based on NET prices per project specifications. If special considerations are required contact BRC Stylwall directly.

Net pricing will be sent based on lineal footage - No drawing will be provided with budgetary quotes unless a typical is requested.

Under no circumstances should a Pricing Proposal be used for FINAL project pricing.

Request for Quotation Details: All Products

Please note: Drawings (preferably CAD) are to be submitted for each quotation request. Pricing Proposals are returned on a Quotation Summary Form, and do not include drawings, unless a typical is requested. Once a Purchase Order or Letter of Intent is received, a complete set of shop drawings will be created.

Specification fees will apply after second revision.

Specification Support Policy

While BRC is pleased to be able to support the specification process and provision of specification services, purchasers are cautioned that this support(s) does not in any way represent any acceptance of liability or responsibility on the part of BRC associated with specification services provided, it is the responsibility of the purchaser to ensure the specifications are ultimately accurate and complete. BRC expressly denies any responsibility or liability associated with errors and/or inaccuracies in specification. The placement of a purchase order referencing specifications prepared by BRC shall imply that the purchaser has reviewed the specifications and has accepted such specifications as being accurate and complete.

Pricing valid for a period of 30 days from date of quotation. It is the purchaser's responsibility to review wall layout and dimensions against site dimensions to ensure accurate wall layout placement.