

GRADE C2/D3/E4 UPHOLSTERY



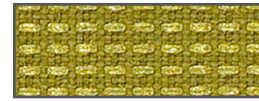
Millennium C Zero | Grade 2 C2



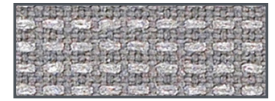
clean F8562



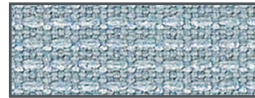
amber F8512



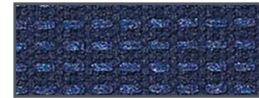
peridot F8682



anchor F8522



voyage F8782

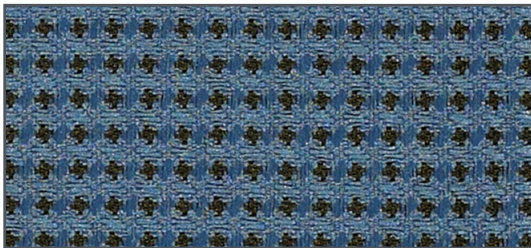


coastal F8572

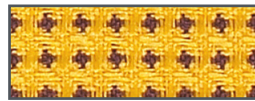


onyx F8662

Expo | Grade 2 C2



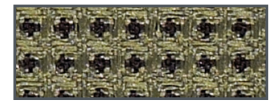
sky F3582



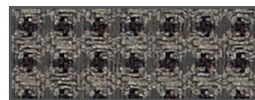
lemon F3552



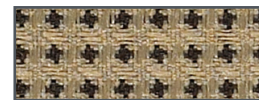
festive F3522



leaf F3572



fog F3512



latte F3562

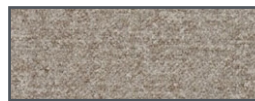


tuxedo 3502

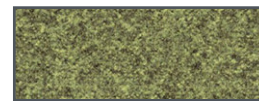
Feltro | Grade 3 D3



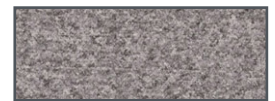
cloud F9583



birch F9533



sprout F9683



steel F9703



spa F9673

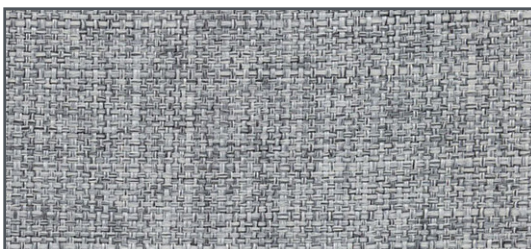


dusk F9593

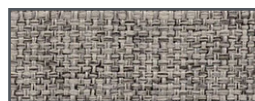


ink F9613

Mello | Grade 3 D3



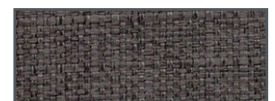
mineral F7893



thicket F7963



fossil F7843



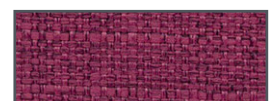
sable F7943



river F7933



aegean F7783

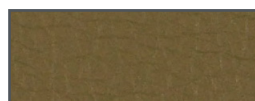


fushcia F7853

Canter EPU | Grade 6 E4



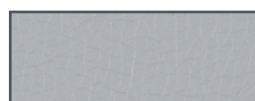
quarry F5786



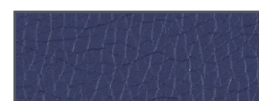
alfalfa F5516



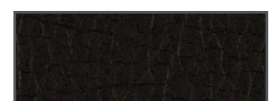
ballad F5536



lucid F5696





ink F5666



onyx F5746

fabric specifications

pattern	content	width	weight	 breaking strength	 colorfastness to light	 flammability
millennium c zero	85% post consumer recycled polyester, 15% polyester	54" usable	0.99 lbs	ASTM 5034 336 lbs. min. warp 279 lbs. min. fill	AATCC 16 opt 3, class 4 60 hours min.	CA Bulletin 117 2013, UFAC class 1, NFPA 260 class 1, ASTM E-84
feltro	100% polyester	56" usable	1.23 lbs	ASTM 5034 306 lbs. min. warp 299 lbs. min. fill	AATCC 16 opt 3, class 4 60 hours min.	CA Bulletin 117 2013, UFAC class 1, NFPA 260 class 1, ASTM E-84
mello	80% post consumer recycled polyester, 20% polyester	56" usable	1.01 lbs	ASTM 5034 379 lbs. min. warp 352 lbs. min. fill	AATCC 16 opt 3, class 4 60 hours min.	CA Bulletin 117 2013, UFAC class 1, NFPA 260 class 1, ASTM E-84
canter epu	100% EPU polyurethane polyester backing	54" usable	1.72 lbs	ASTM 5034 0 lbs. min. warp 0 lbs. min. fill	AATCC 16 opt 3, class 4	CA Bulletin 117 2013, UFAC class 1, NFPA 260 class 1
expo	65% post industrial recycled polyester, 35% post consumer recycled polyester	54" usable	0.54 lbs	ASTM 5034 142 lbs. min. warp 143 lbs. min. fill	AATCC 16 opt 3, class 4	CA Bulletin 117 2013, UFAC class 1, NFPA 260 class 1