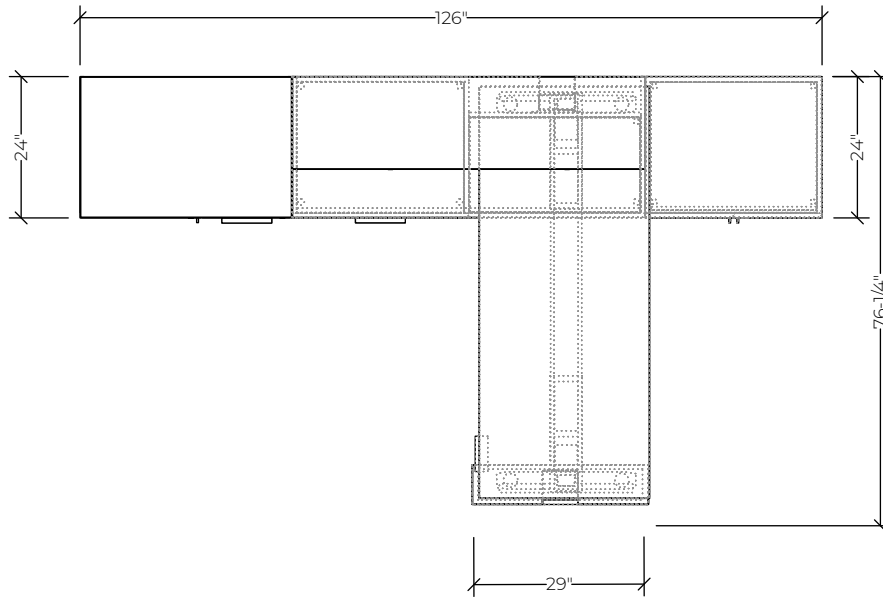




Please refer to page 2 for list pricing information.

Pricing is for budgetary reference only and is subject to change. Availability of finishes and materials may vary due to manufacturer lifecycle updates. Explore more Idea Starters at www.brc.group.



#	Catalogue	Part Number	Description	Quantity	List	Ext. List
1	FIL	FAMLAW40H12	Modesty Panel, Laminate 40Wx12H, Laminate	1	\$567.00	\$567.00
2	FIL	FEC1NW30D24H1B1	Cushion Top for Credenzas - Box Style,30Wx24Dx1H,Grade 1	1	\$647.00	\$647.00
3	FIL	FEFBFW30H29G1	Element Free Fabric Panel 30Wx29H, Grade 1	2	\$406.00	\$812.00
4	FIL	FFCSZW60D24H22M3F30L	Integrated Leg Credenza - 22"H with Full Front,60Wx24Dx22H,M3 Laminate,Left Hand	1	\$2,709.00	\$2,709.00
5	FIL	FFSSZW6.75D30H22M3L	Height Adjustable Leg Surround - 22"H,6.75Wx30D,M3 Laminate,Left Hand	1	\$825.00	\$825.00
6	FIL	FLCSZW30D24H22M3	Low Closed Storage with Top, Full Front 30Wx24Dx22H,M3 Laminate	1	\$1,206.00	\$1,206.00
7	FIL	FWMAZW36D24H66M3L	Wardrobe, Open Storage & BF Pedestal, Full Front 36Wx24Dx66H,M3 Laminate,Left Hand	1	\$2,618.00	\$2,618.00
8	FIL	FZCLNW60D15.75H15M3	Wall Mounted Hinged Door Cabinet 60Wx15.75Dx15H,M3 Laminate	1	\$1,160.00	\$1,160.00
9	FIL	MWSTCW70D29M1	Mesa Rectangular 2 Leg Electric T Base Table Sit-Stand,70Wx29D,M1 Laminate	1	\$2,431.00	\$2,431.00
					Total (List)	\$12,975.00

Pricing is for budgetary reference only and is subject to change. Availability of finishes and materials may vary due to manufacturer lifecycle updates. Explore more Idea Starters at www.brc.group.