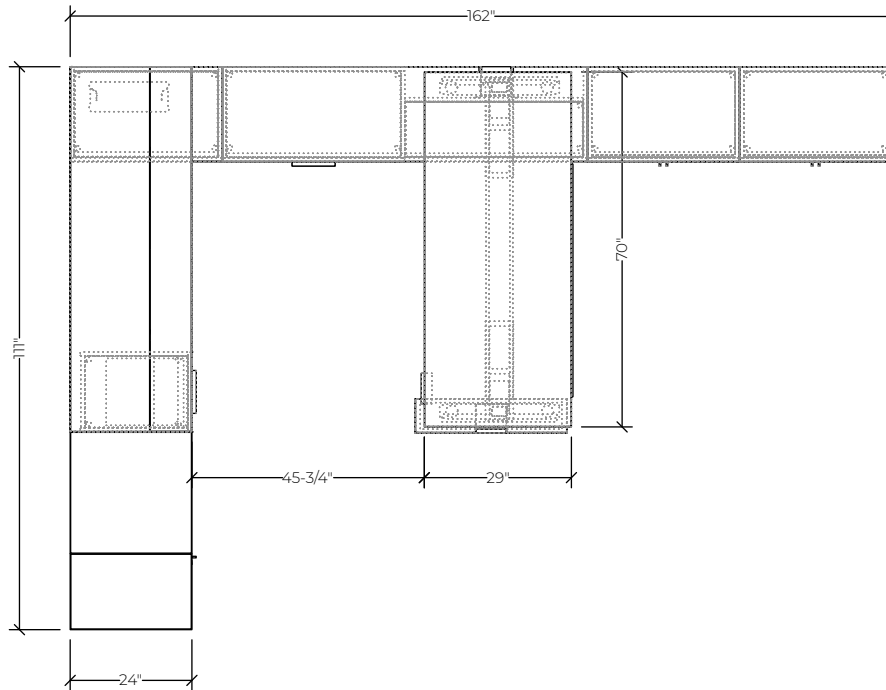




Please refer to page 2 for list pricing information.

Pricing is for budgetary reference only and is subject to change. Availability of finishes and materials may vary due to manufacturer lifecycle updates. Explore more Idea Starters at www.brc.group.



#	Catalogue Part Number	Description	Quantity	List	Ext. List
1	FIL FACS5.625	Spacer Bracket	1	\$232.00	\$232.00
2	FIL FAMLAW46H12	Modesty Panel, Laminate 46Wx12H, Laminate	1	\$600.00	\$600.00
3	FIL FB24ZW24D24H72M3	Bookcase 24" Deep Solid Back, Full Front, 24Wx24Dx72H, M3 Laminate	1	\$2,042.00	\$2,042.00
4	FIL FEFBDW36H28G1	Element Desk Height Filler Fabric Panel 36Wx28H, Grade 1	2	\$423.00	\$846.00
5	FIL FFCSZW72D18.75H22M3F36L	Integrated Leg Credenza - 22"H with Full Front, 72Wx18.75Dx22H, M3 Laminate, Left Hand	1	\$2,770.00	\$2,770.00
6	FIL FFSSZW6.75D30H22M3L	Height Adjustable Leg Surround - 22"H, 6.75Wx30D, M3 Laminate, Left Hand	1	\$825.00	\$825.00
7	FIL FLCSZW30D18.75H22M3	Low Closed Storage with Top, Full Front 30Wx18.75Dx22H, M3 Laminate	2	\$1,180.00	\$2,360.00
8	FIL FLOSNW30D18.75H22M3	Low Open Storage With Top Full Front 30Wx18.75Dx22H, M3 Laminate	1	\$917.00	\$917.00
9	FIL FSUMZW15.75D22H28	Undermount Pedestal 2 Box 1 File With Full Front, 15.75Wx22Dx28H	1	\$1,095.00	\$1,095.00
10	FIL FTOPNW72D24M1	Component Worksurface & Panel 72Wx24D, M1 Laminate	1	\$421.00	\$421.00
11	FIL FWTCZW15D24H72M3L	Closed Wardrobe Single Door Full Front 15Wx24Dx72H, M3 Laminate, Left Hinged	1	\$1,593.00	\$1,593.00
12	FIL FZCLNW72D15.75H15M3	Wall Mounted Hinged Door Cabinet 72Wx15.75Dx15H, M3 Laminate	1	\$1,257.00	\$1,257.00
13	FIL MWSTCW70D29M1	Mesa Rectangular 2 Leg Electric T Base Table Sit-Stand, 70Wx29D, M1 Laminate	1	\$2,431.00	\$2,431.00
				Total (List)	\$17,389.00

Pricing is for budgetary reference only and is subject to change. Availability of finishes and materials may vary due to manufacturer lifecycle updates. Explore more Idea Starters at www.brc.group.