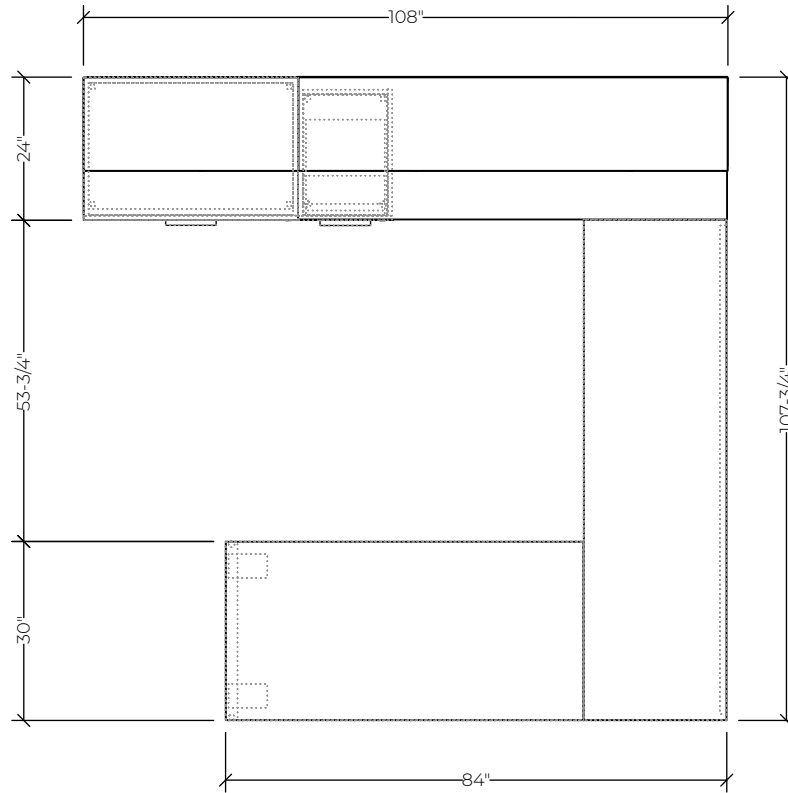




Please refer to page 2 for list pricing information.



#	Catalogue Part Number	Description	Quantity	List	Ext. List
1	FIL FAHENW60D30H29M1	Worksurface Add-on with Open End Base 60Wx30Dx29H,M1 Laminate (Includes One Set Flat Bracket FAFLA)	1	\$1,413.00	\$1,413.00
2	FIL FAMPAW52H12	Modesty Panel, Frosted Acrylic 52Wx12H	1	\$820.00	\$820.00
3	FIL FEFBDW36H22G1	Element Desk Height Filler Fabric Panel 36Wx22H, Grade 1	3	\$400.00	\$1,200.00
4	FIL FL2HZW36D24H29M1	Standalone 2 High Lateral Full Front 36Wx24Dx29H, M1 Laminate	1	\$1,875.00	\$1,875.00
5	FIL FRTANW84D24H29M1R	Return Table with Recessed Gable 84Wx24Dx29H,M1 Laminate, Right Hand (Includes One Set Flat Bracket FAFLA)	1	\$1,343.00	\$1,343.00
6	FIL FSUMZW15.75D22H28	Undermount Pedestal 2 Box 1 File With Full Front,15.75Wx22Dx28H	1	\$1,095.00	\$1,095.00
7	FIL FTTFNW72D24H29M1	Table with Full Gables 72Wx24Dx29H,M1 Laminate	1	\$906.00	\$906.00
8	FIL FZCLNW36D15.75H15M3	Wall Mounted Hinged Door Cabinet 36Wx15.75Dx15H,M3 Laminate	1	\$997.00	\$997.00
9	FIL FZCLNW72D15.75H15M3	Wall Mounted Hinged Door Cabinet 72Wx15.75Dx15H,M3 Laminate	1	\$1,257.00	\$1,257.00
				Total (List)	\$10,906.00

Pricing is for budgetary reference only and is subject to change. Availability of finishes and materials may vary due to manufacturer lifecycle updates. Explore more Idea Starters at www.brc.group.