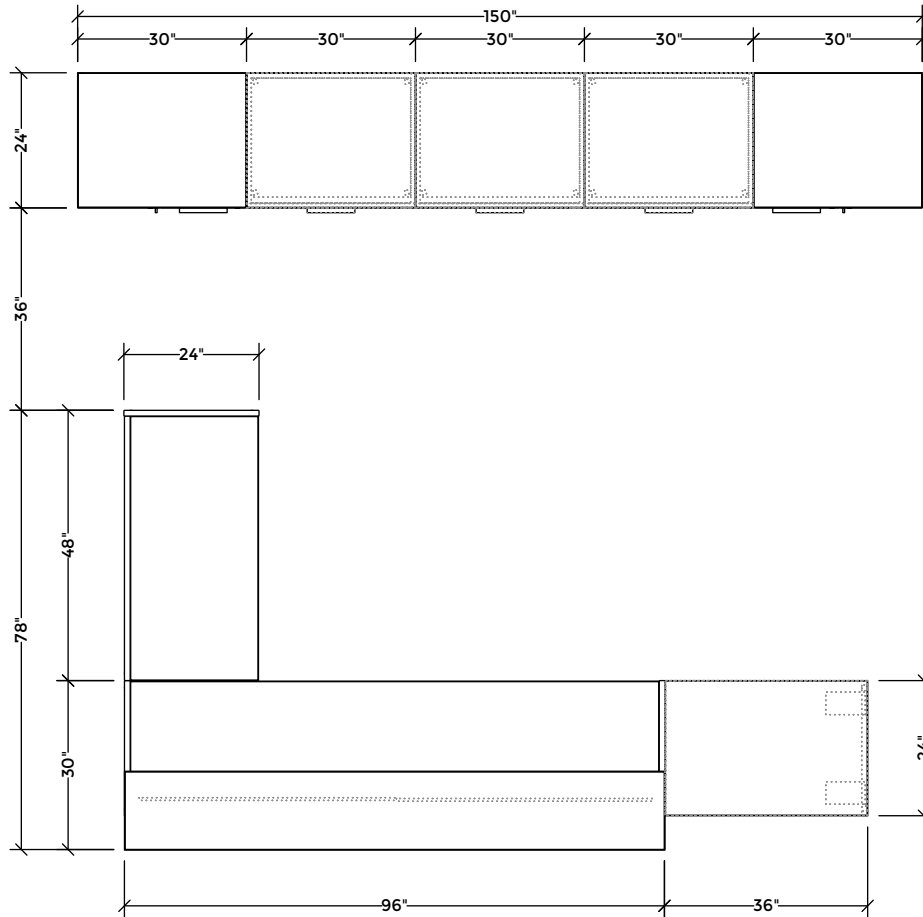


Please refer to page 2 for list pricing information.

Pricing is for budgetary reference only and is subject to change. Availability of finishes and materials may vary due to manufacturer lifecycle updates. Explore more Idea Starters at www.brc.group.



#	Catalogue Part Number	Description	Quantity	List	Ext. List
1	FIL FAMLAW34H12	Modesty Panel, Laminate 34Wx12H, Laminate	1	\$553.00	\$553.00
2	FIL FJRHNW48H13GH1	Tackboard for Reception Desk Hutches 48Wx13H, MK Grade 1 (Includes 1/2" tackable fabric)	2	\$419.00	\$838.00
3	FIL FL2HZW30D24H29M1	Standalone 2 High Lateral Full Front 30Wx24Dx29H, M1 Laminate	3	\$1,734.00	\$5,202.00
4	FIL FROLNW96D30H42M1	Reception Desk, Straight Front 96W30Dx42H, M1 Laminate	1	\$2,987.00	\$2,987.00
5	FIL FRRANW48D24H41M1R	Return Desk for Reception 48Wx24Dx41H, M1 Laminate, Right Hand	1	\$1,166.00	\$1,166.00
6	FIL FRWGNW36D24H29M1	Worksurface Add-On With End Gable 36Wx24Dx29H, M1 Laminate (Includes One Set Flat Bracket FAFLA)	1	\$851.00	\$851.00
7	FIL FWKAZW30D24H72M3L	Wardrobe, Open Storage & FF Pedestal, Full Front 30Wx24Dx72H, M3 Laminate, Left Hand	1	\$3,234.00	\$3,234.00
8	FIL FWKAZW30D24H72M3R	Wardrobe, Open Storage & FF Pedestal, Full Front 30Wx24Dx72H, M3 Laminate, Right Hand	1	\$3,234.00	\$3,234.00
				Total (List)	\$18,065.00