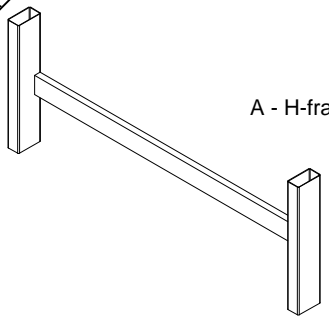
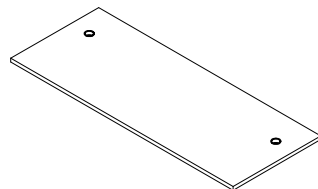


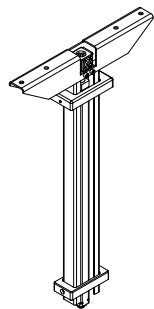
BOM



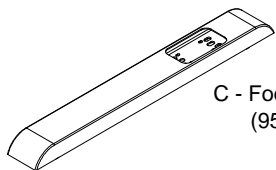
A - H-frame x1



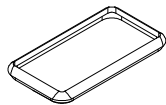
G - Worksurface



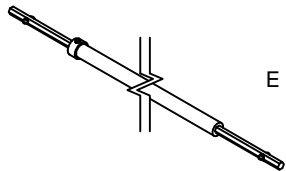
B - T-Frame assembly (9550299) x2



C - Foot (9550325) x2



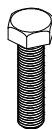
D - Foot grommet x2



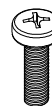
E - Center rod assembly x2



F - Screw, #8A, 3/4", pan head (9200838) x8



H - 5/16-18x.4"L hex bolt (9200013) x4



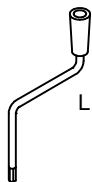
I - Screw, M6x16mm Pan Head (9200843) x2



J - Washer 5/16 external tooth (9201000) x6



K - Pan head self-tap #8x3/4" (9200929) x4

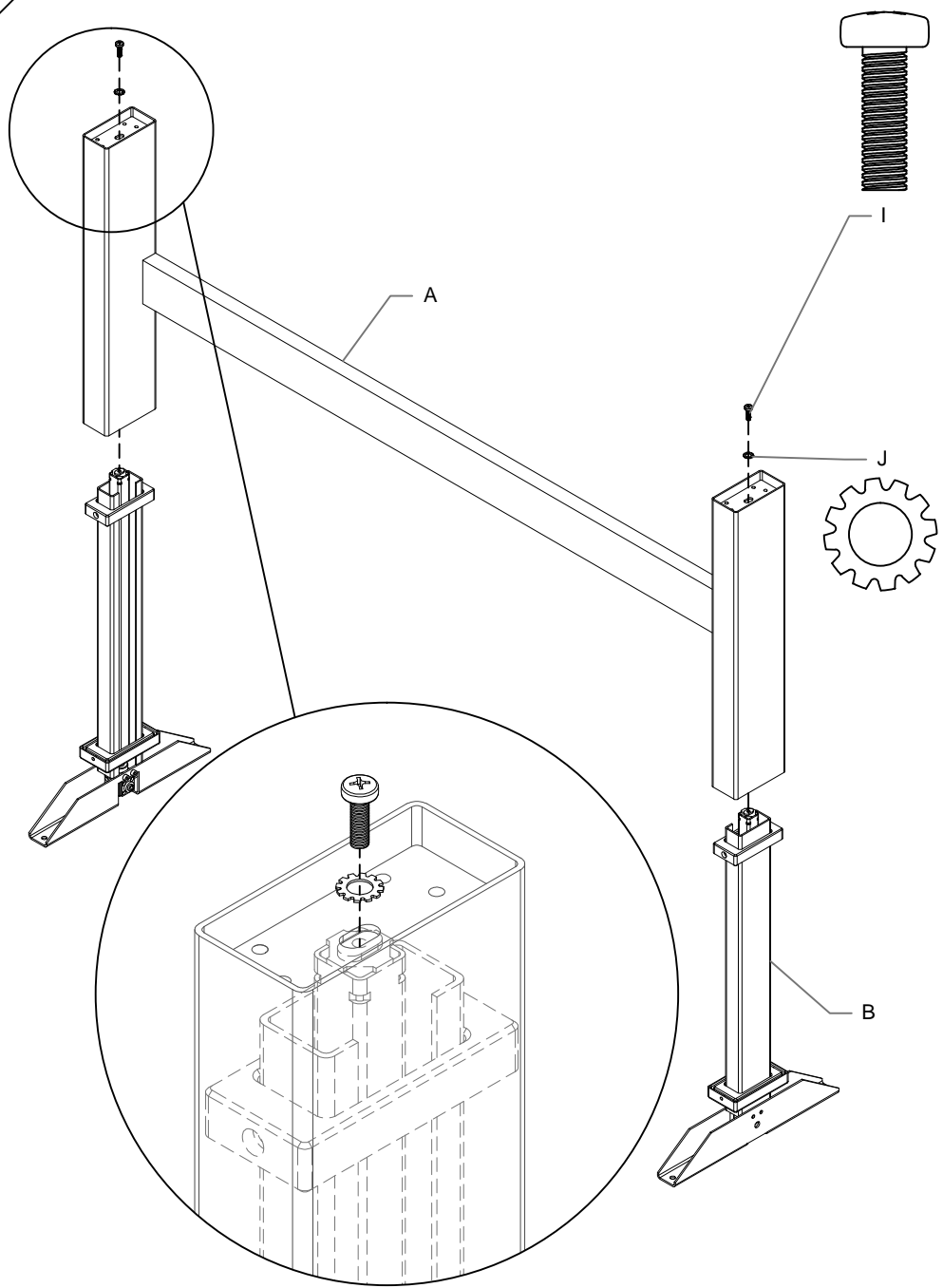


L - Handle (9100045) x1

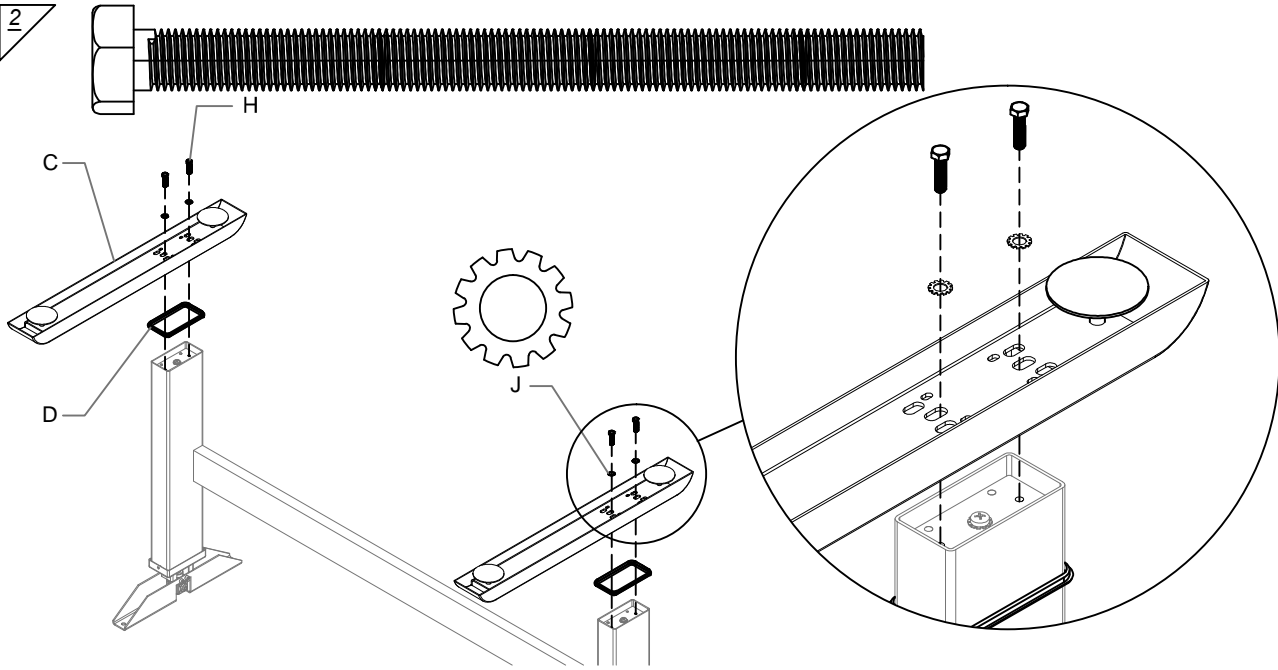


M - 45mm grommet (9301100) x2

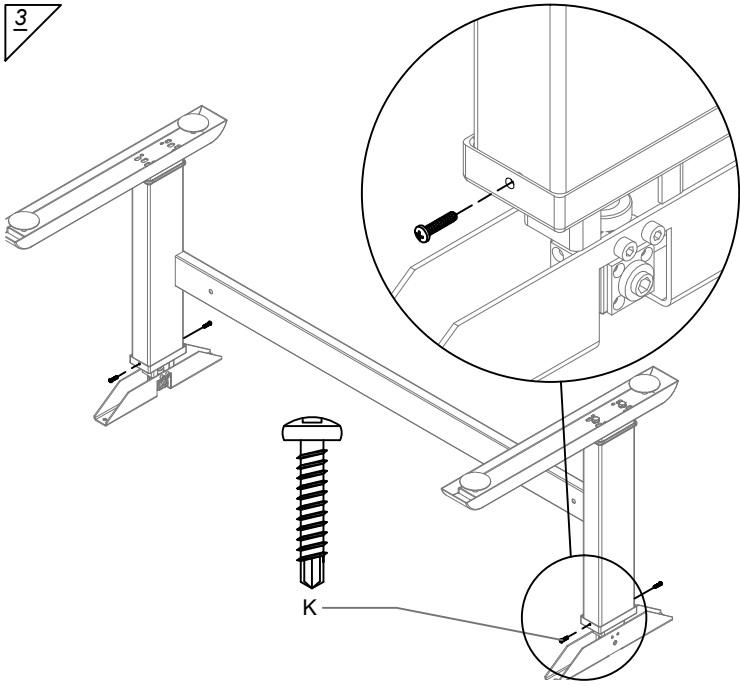
1



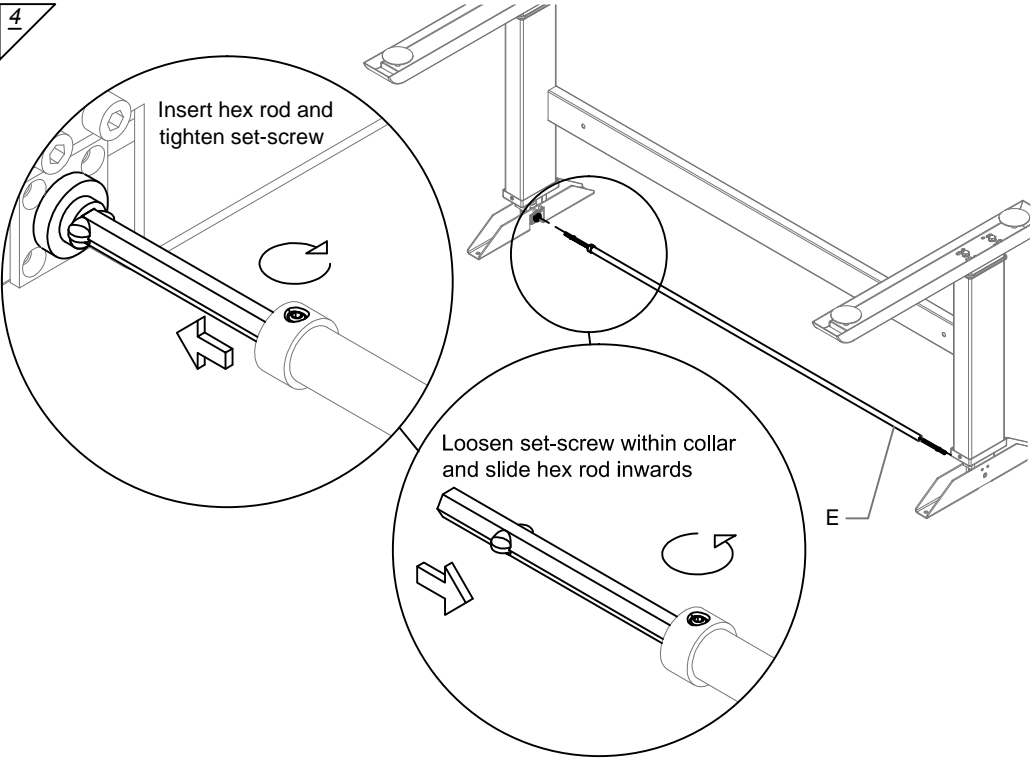
2



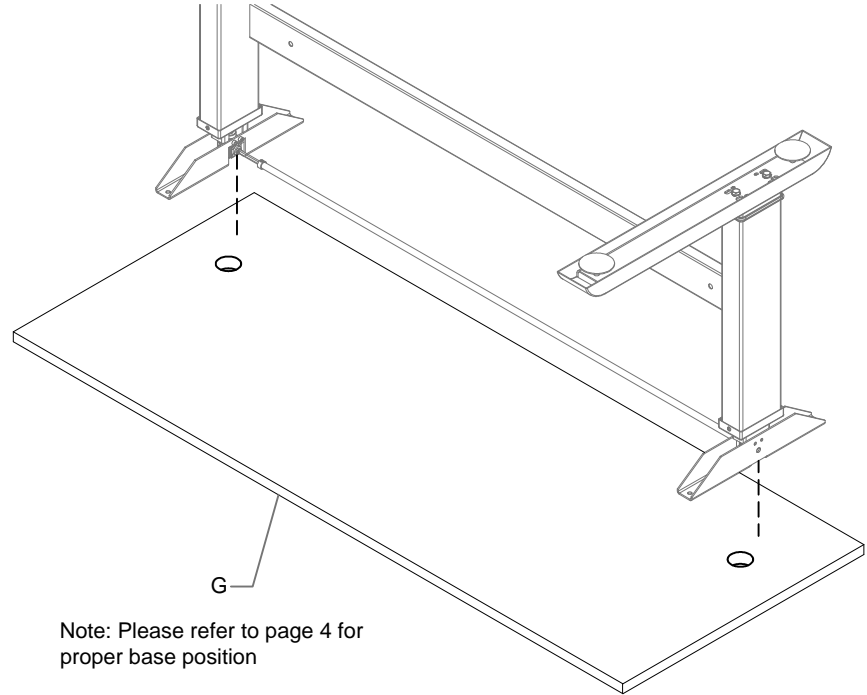
3



4

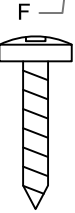
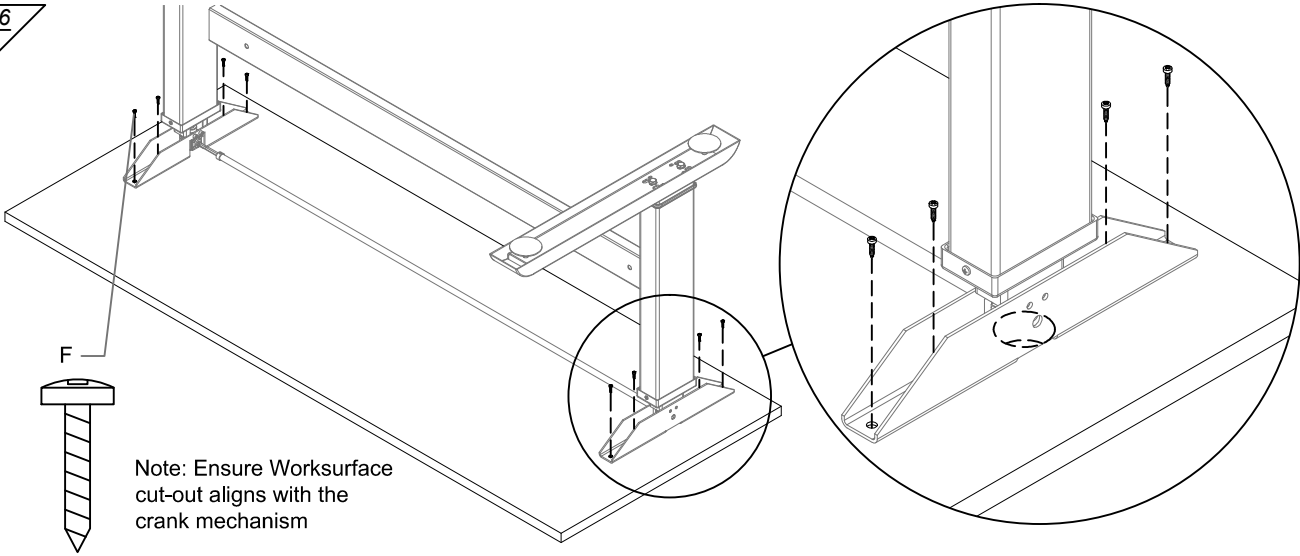


5



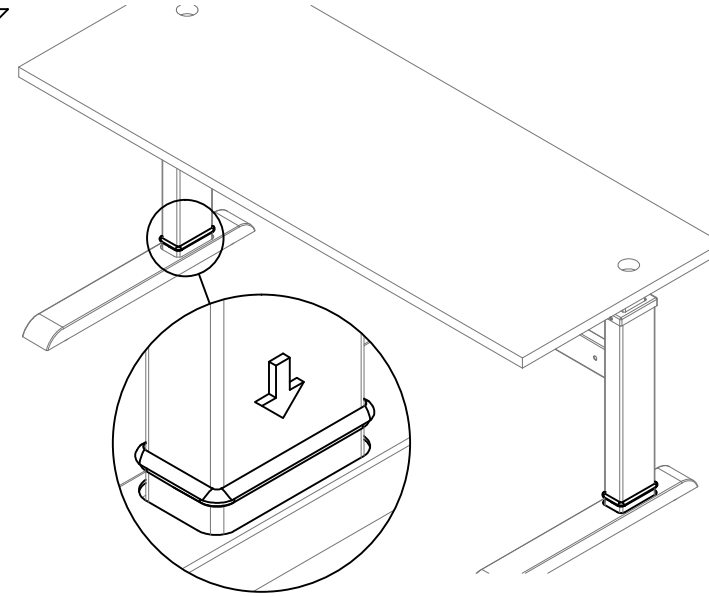
Note: Please refer to page 4 for proper base position

6

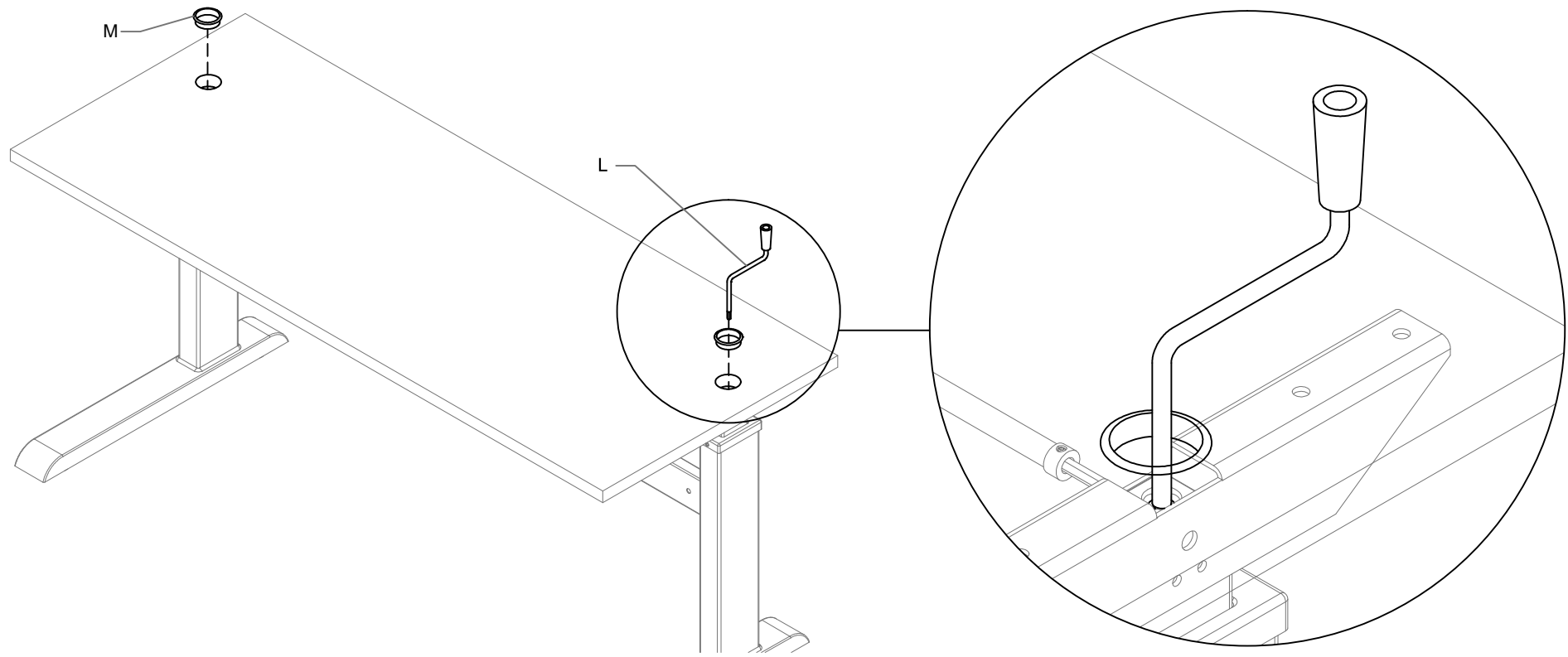


Note: Ensure Worksurface cut-out aligns with the crank mechanism

7



8



MWCC\_Base Position

