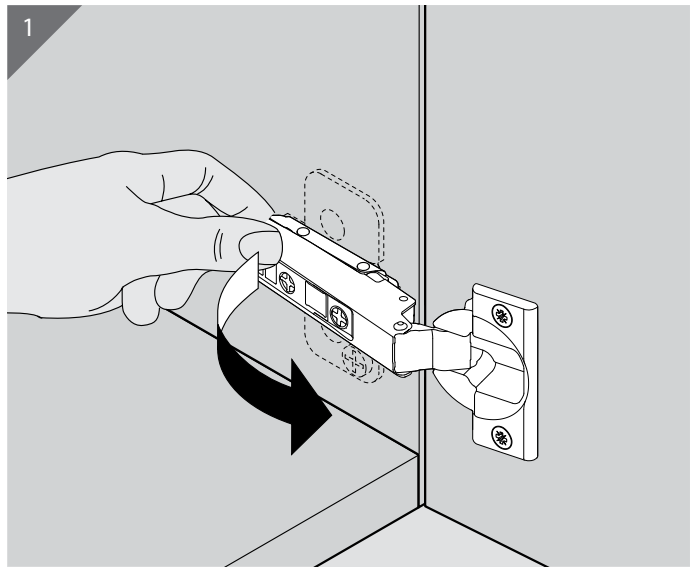
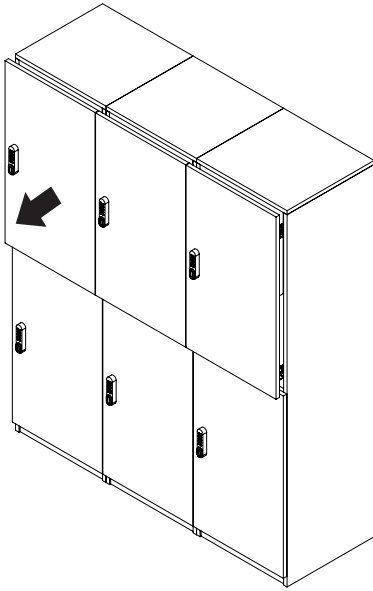
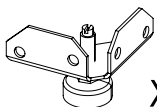
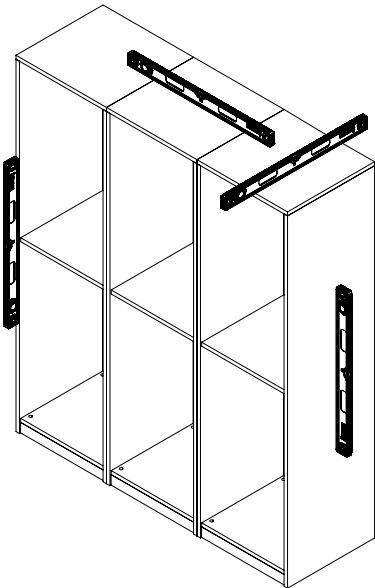


# LOCKERS LEVELING GUIDE

## 1. START BY REMOVING ALL THE DOORS USING THE CLIP ON HINGES

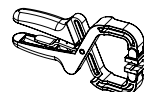
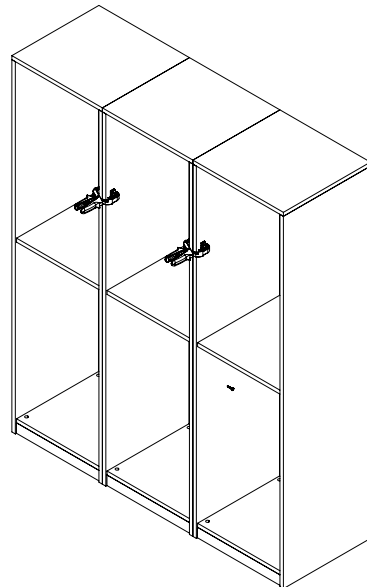


## 2. LEVEL EACH LOCKER BACK TO FRONT AND SIDE TO SIDE, USING THE LEVELERS. UNITS MAY NEED TO BE TIPPED BACKWARD OR FORWARD TO ACCESS THE LEVELLERS



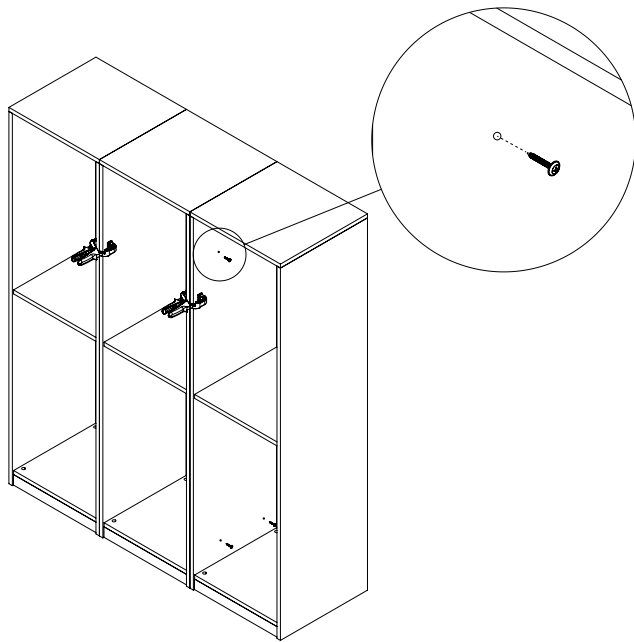
X 4 PER LOCKER

## 3. AFTER LEVELING, CLAMP THE LOCKERS TOGETHER TO KEEP THEM IN POSITION



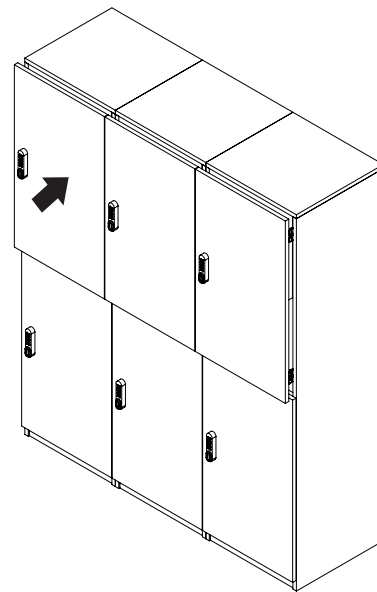
CLAMP

4. SCREW LOCKERS TOGETHER USING THE PROVIDED SCREWS AND PILOT HOLES



 X 4 PER LOCKER

5. PLACE THE DOORS BACK ON (REVERSE STEP 1)



6. ADJUST THE DOOR POSITION TO ALIGN THE DOORS BY USING THE ADJUSTMENT SCREWS ON THE HINGES: 1) UP AND DOWN, 2) LEFT AND RIGHT, 3) INWARD AND OUTWARD

