



Lockers Overview

BRC laminate lockers offer versatility and ample storage for your personal belongings. Key lock configurations include a single pull providing a clean aesthetic while a keypad enables easy configuration for multiple users. With unique design features and varying heights and styles, creative choices seem endless. BRC's lockers provide an attractive, functional and durable storage solution for your space needs.

Locker Features



- BRC manufactures durable laminate lockers in various configurations with unique design features
- Available in different styles and sizes to fit any office requirement
- Available in all standard BRC finishes, with an upcharge for any custom finish
- All exposed edges are manufactured with thermo-rigid laser applied 3/32" (2mm) thick edging
- Units have one inch of leveling
- Recessed or 2" kick
- BRC products meet ANSI/BIFMA e3 Furniture Sustainability Standards, BRC is Level® 2 Certified
- Grain direction is horizontal on tops and shelves while vertical for gables and door fronts
- Standard casegoods construction is 3/4" thick low-pressure laminate (LPL)
- All low-pressure laminate panels are 45lbs density and finished both sides
- Most BRC low-pressure laminate finishes can be matched to high-pressure laminate (HPL)
- Tops are in one core/surface material of 3/4" (19.4mm)
- Fronts come in an option of LPL or HPL material
- Single door units include a fixed upper hat shelf and adjustable lower boot shelf
- One, Two and Three door units include a coat hook on each side
- Four, Five and Six door units do not include any hardware on each side
- All lockers include a single pull handle where keyed lock is specified (LBB, LBS, LHB and LHS)
- Three standard lock options are available: lock core and key, hasp lock or electronic lock
- Most parts are manufactured in a way that allows for replacement in the field
- Storage units are shipped fully assembled
- Horizontal datum lines on 72" and 60" high team lockers will not align when placed side by side
- Storage products must be secured to an additional support structure (i.e. wall or adjacent cabinet)

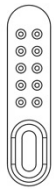
Locker Specs



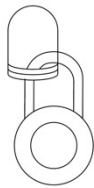
Laminate codes

- M3 – 3/4" LPL

Lock Options



Keypad
LKP



Hasp
HSP



Hudson / HMI key
Black 'LHB'
Silver 'LHS'

Optional Extra

- Locker number plates

No-Charge Options

- All standard laminates available

Special Notes

This product is not freestanding and must be secured or ganged to an additional support structure such as a wall and/or an adjacent locker.

Price Guide & Dimensions

To view the prices and dimensions in more detail visit:

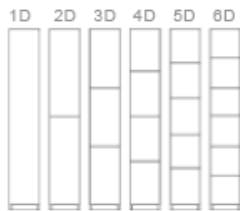
Health Care Price Guide at: <https://brc.group/resources/price-guides>

FIL Price Guide at: <https://brc.group/herman-miller-alliance>

Locker Configurations

Heights: 41", 48", 60", 66", 72" Widths: 12", 15", 20" Depths: 12", 20", 24"

Door Options for Lockers 72" High



Door Options for Lockers 60", 66" High



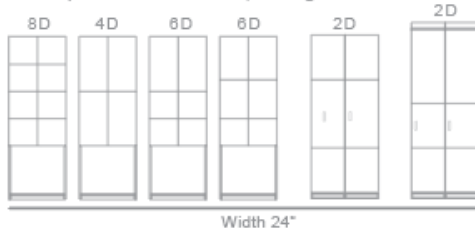
Door Options for Lockers 41", 48" High



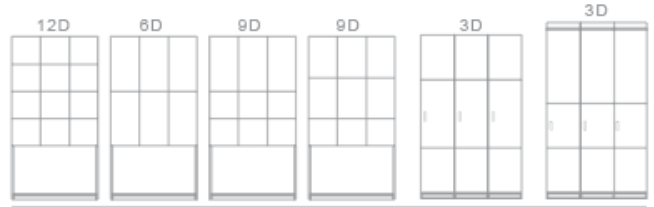
Team Locker Configurations

Heights: 60" 72" Widths: 24" 36" Depth: 18", 24"

Door Options for Lockers 72", 78" High

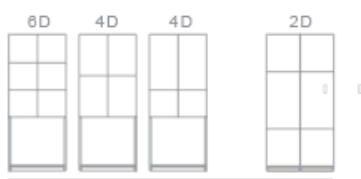


Width 24"

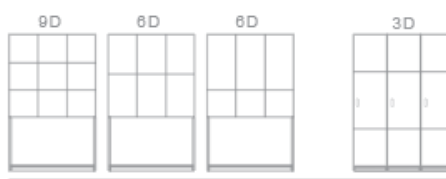


Width 36"

Door Options for Lockers 60" High

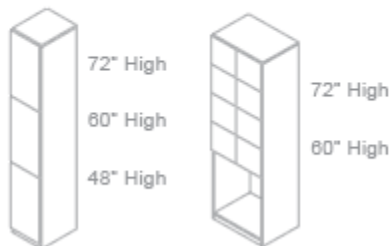


Width 24"

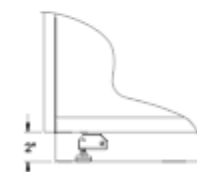


Width 36"

SPECIAL NOTES: This product is not freestanding and must be secured or ganged to an additional support structure such as a wall and/or an adjacent locker.



Base / Foot



Recessed or 2" Kick (X)



Locker Wall & Locker Planter Islands



Kit Lock

BRC Standard Catalogue Hardware



This lock provides access control without the need for keys. By simply drilling another hole, the KL1000 Classic lock can also be fitted/attached to a locker or cabinet that does not have an existing locking device. Two AAA batteries enable the device to perform up to 15,000 openings.

Key Features

- Easy fit
- 11 individual round buttons
- 15,000 openings from 2 x AAA cells (supplied)
- Battery override: access control without the need for keys
- Silver and black finishes available from stock
- Left, right and vertical versions
- Not suitable for a chlorine environment
- Use in offices, schools, warehouses, hospitals, care homes, nurseries, hotels, and leisure facilities.

Alternate Locks

Available

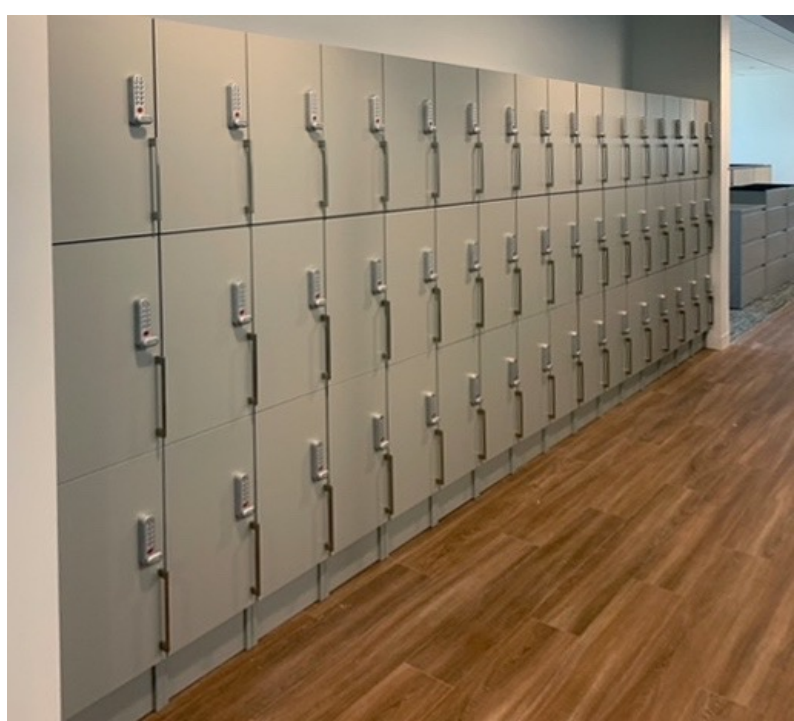


| FEATURES | VERSA BASIC | VERSA ADVANCED | ASPIRE BASIC | ASPIRE ADVANCED |
|-----------------------------|----------------|-------------------|-----------------|--------------------|
| Multiple Model Options | ✓ | ✓ | ✓ | ✓ |
| Multiple Standard Finishes | ✓ | ✓ | ✓ | ✓ |
| Audible & Visual Indicators | ✓ | ✓ | ✓ | ✓ |
| Surface Mount | ✓ | ✓ | ✓ | ✓ |
| Recess Mount | ✓ | ✓ | | |
| Shared or Assigned Use | ✓ | ✓ | ✓ | ✓ |
| Dual Use | ✓ | ✓ | ✓ | ✓ |
| Non-Handed | ✓ | ✓ | ✓ | ✓ |
| ADA Compliant | ✓ ** | ✓ ** | ✓ | ✓ |
| IP55 Certified | ✓ | ✓ | ✓ | ✓ |
| FCC, IC, and CE Certified | ✓ | ✓ | ✓ | ✓ |
| Battery Powered | ✓ | ✓ | ✓ | ✓ |
| Real Time Clock | | ✓ | | ✓ |
| Mobile App/Audit Trail | | ✓ | | ✓ |

Lockers Installed by BRC



Lockers Installed by BRC



Lockers Installed by BRC



Lockers Installed by BRC



Warranty Summary

BRC Furniture Products carry a 12-year limited structural warranty. BRC furniture panel and table electrical cabling carry a 3-year limited warranty. All moving user-adjustable components carry a 5-year limited structural warranty. All other electrical or electronic elements of BRC furniture carry a 1-year limited warranty.

For full warranty details, terms and conditions, please visit <https://brc.group/resources/warranty>

