

PO5

## Executive Office with Height Adjustable Table

---



PO5

# Executive Office



## Technical Specifications

**Specifications**

Board Weight: 45lbs medium density

Board Thickness (Case/Fronts): 3/4"

Edge Banding: Polypropylene on all edges

**Hardware:** Slides: box drawers – 100lb rated  
File drawers – 150lb rated

**Environmental Specs:**

Indoor Air Quality: Clean Air, Gold; BIFMA Level 2

FSC (HPL Tops Only): Optional / Available

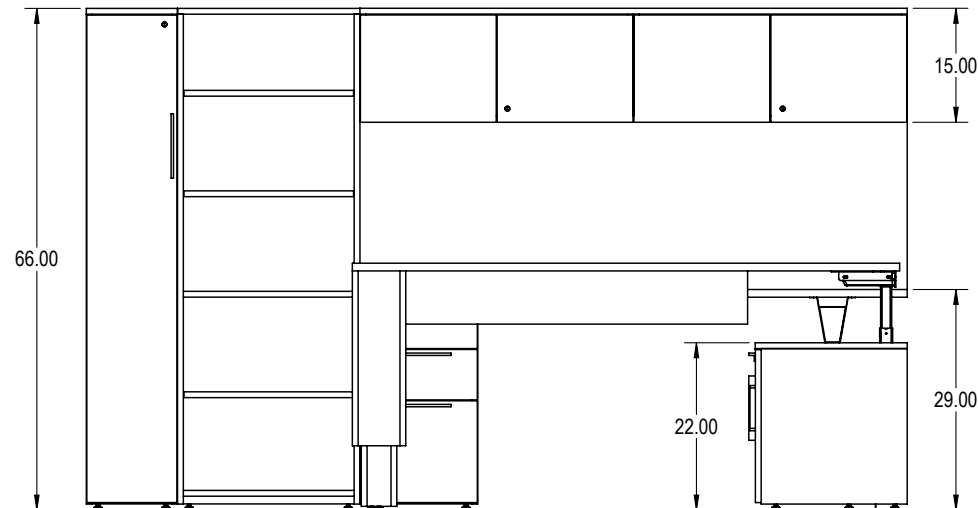
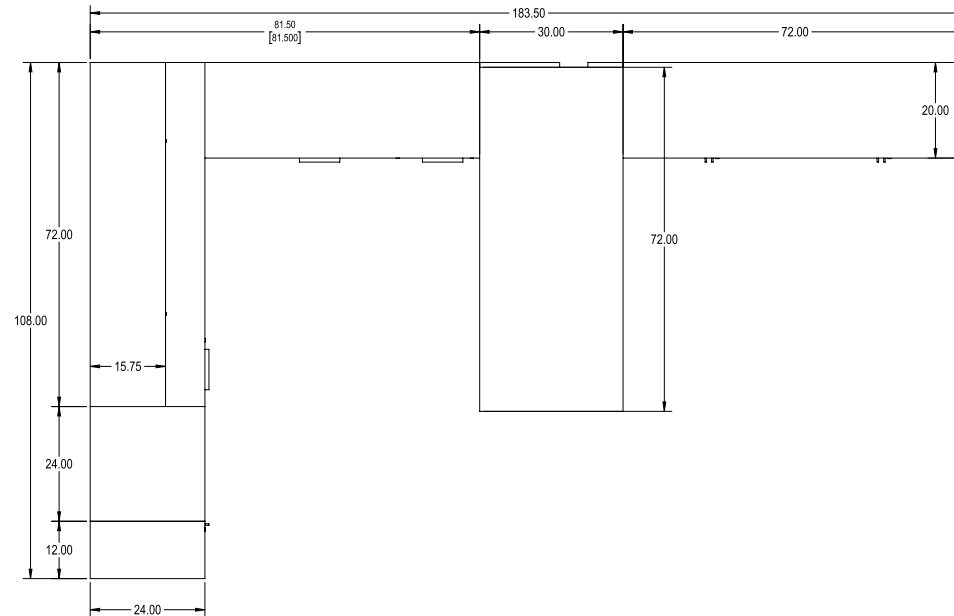
PVC: None

**Warranty:** 12-Years / 1 Shift - Limited Structural

**Dealer Considerations**

Freight Charges: Refer to BRC freight program

Specification Support: Available



PO5

# Executive Office



## List Pricing

**NWTCZW12D24H66M1-HL**

Closed Wardrobe Single Door, Full Front .....1,211.00

**NB24ZW24D24H66M1**

Bookcase 24" Deep Solid Back, 1" Kick.....1,389.00

**NZCLNW72D15.75H15M1**

Wall Mounted Hinged Door Cabinet.....904.00

**(Custom Code Created on Request)**

Wall Mount White Back Painted Glass .....3,766.00

**NTOPNW72D24M1**

Modular Component Worksurface .....458.00

**NSUMZW15.5D24H28**

Undermount Pedestal 2 Box 1 File, Full Front .....688.00

**AACSAH5.625**

Spacer Bracket.....168.00

**NFMSZW30D20H22.25M1**

Modular Integrated Leg Cabinet - 22.25" High.....1,241.00

**NSLBZW15.5D20H21.25**

Low Pedestal Box File, No Top, Full Front .....671.00

**NSLFZW36D20H21.25**

Low Lateral Box File, No Top, Full Front.....856.00

**NLTSZW30D20H21.25**

Low Open Storage, No Top, 1" Kick.....563.00

**(Custom Code Created on Request)**

Modular Component Worksurface (Common Top).....504.00

**(Custom Code Created on Request)**

Telescoping Intergrated HA Table with Modesty .....7,144.00

**NCCCZW72D20H22M3L36R36**

Credenza Double Closed Storage, Full Front.....1,548.00

**Total.....\$21,111.00**