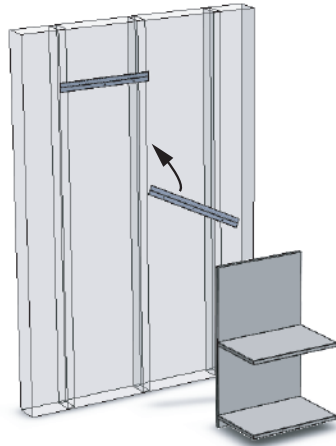
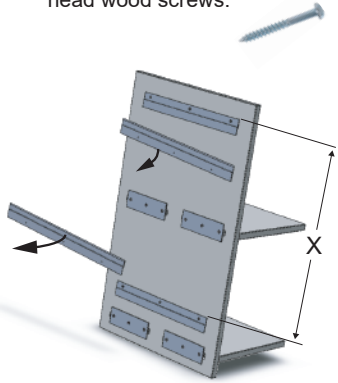




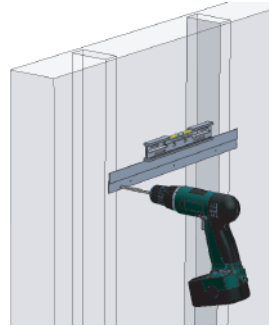
This guide assumes that the wall mounting surface is level and plumb. Mounting into wood wall studs is recommended. For metal wall studs or otherwise, sufficient support must be added to accommodate heavy loads. Example: a 72" tall 5 shelf unit has a total load rating of 200lbs, plus the shelf weight itself. In this case, the wall and mounting hardware should be able to accommodate up to 400lbs. Contact your BRC representative for weight limit requirements and recommendations.

Single Element Installation

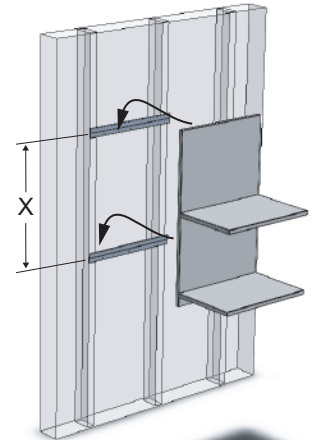
- 1 Prepare wall cleat brackets. Choose wall mount hardware (not included) according to wall material, Element and potential load. Example: for wood studs, use 2" long #10 pan head wood screws.



- 2 Mount top cleat to wall at desired location.



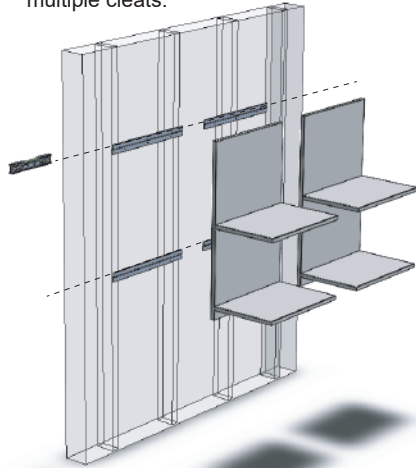
- 3 If required, drill additional mounting holes in cleat to accommodate wall studs. For lower or additional cleats, measure back of element (X) for distance and mount accordingly. Level wall cleats before attaching to studs.



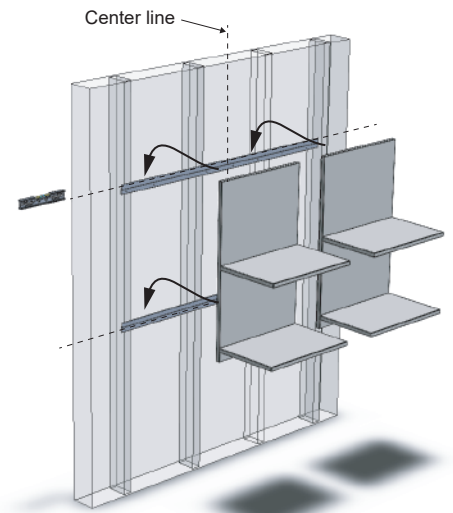
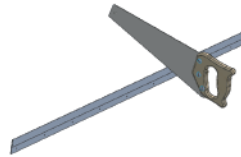
- 4 Lift up and slide shelf down onto wall cleats.

Multiple Element Side By Side Installation

- 1 Follow general installation as above. Align and level multiple cleats.



- 2 Single rail option: To allow for easier alignment across multiple side by side installations, a single long rail can be used. Purchase separate and cut on site as required.

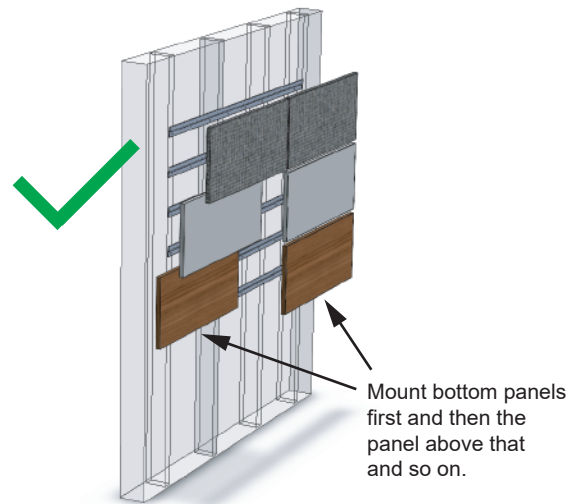
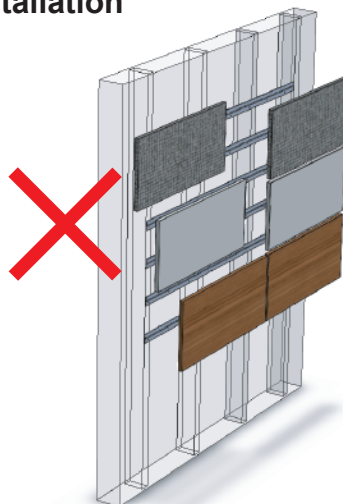


- 3 Measure multiple Element panel width and cut 6" shorter (3" short for each side). Center cleat to installation location.

Multiple Element Stacked Installation

- 1 Follow general installation as above. Align and level multiple cleats.

- 2 Installation must start with the lowest panel first, then panels above it in succession.





SAFETY NOTICE

Instability Hazard

Mobile items on casters such as flip top, personal and movable tables of any type and storage items of any type may present an instability hazard if not secured correctly while in use or in storage. Flip top tables or training tables of any type, are inherently more unstable when folded. BRC provides the following guidelines & warnings when using mobile products:

- Lock casters immediately after moving. Do not leave the casters unlocked when in use or in storage.
- Motion may increase the instability of any item with casters. If the wheels hit an obstruction the table's forward momentum often causes overturn, especially if the item is not equipped with wheel extensions. Exercise strong caution while moving these items.
- Use caution when abrupt level changes in the floor are present (such as a doorway or room threshold) as caster failure or tipping may result.
- Do not stand, sit or lean on mobile items for support. They are not intended for this use and personal injury or property damage may result.
- Mobile units that feature height adjustable elements must be lowered to the minimum compressed height when moving to prevent instability. It is also recommended the user remove all computer equipment or other accessories to prevent possible weight imbalance or damage to equipment.
- Failure to follow the guidelines above may result in property damage or personal injury.

Heavy Load

- This product must be anchored to wall to ensure stability & safety.
- It is the owner and installers responsibility to ensure that the wall type and construction is of sufficient strength to carry the loads of any wall mounted products and their contents.
- Failure of the wall and anchors to support all imposed loads may result in property damage or personal injury.
- BRC can provide size and empty weight of its products only. As wall blocking is considered a building construction process, BRC cannot provide recommendations in this respect and cannot be responsible for damage or injury that may occur as a result of improper installation and/or blocking.

Load Bottom Drawer First!

- Operate one drawer at a time.
- Unit may tip if loaded incorrectly.
- Unit should be attached to a wall or other furniture to reduce tipping hazard.
- Always load the heaviest files in the bottom drawer.
- Failure to follow the guidelines above may result in property damage or personal injury.

11/2022